

UNFURNISHED



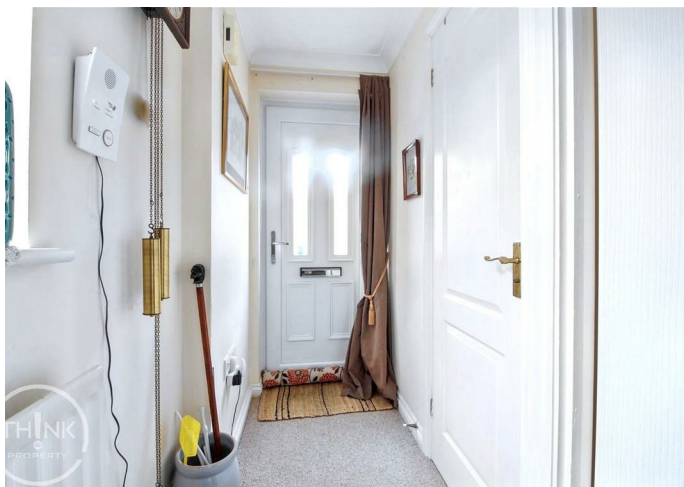
House - Semi-Detached

73 THE DROVE,  
TAVERHAM, NR8  
6FT

£1,250

#### FEATURES

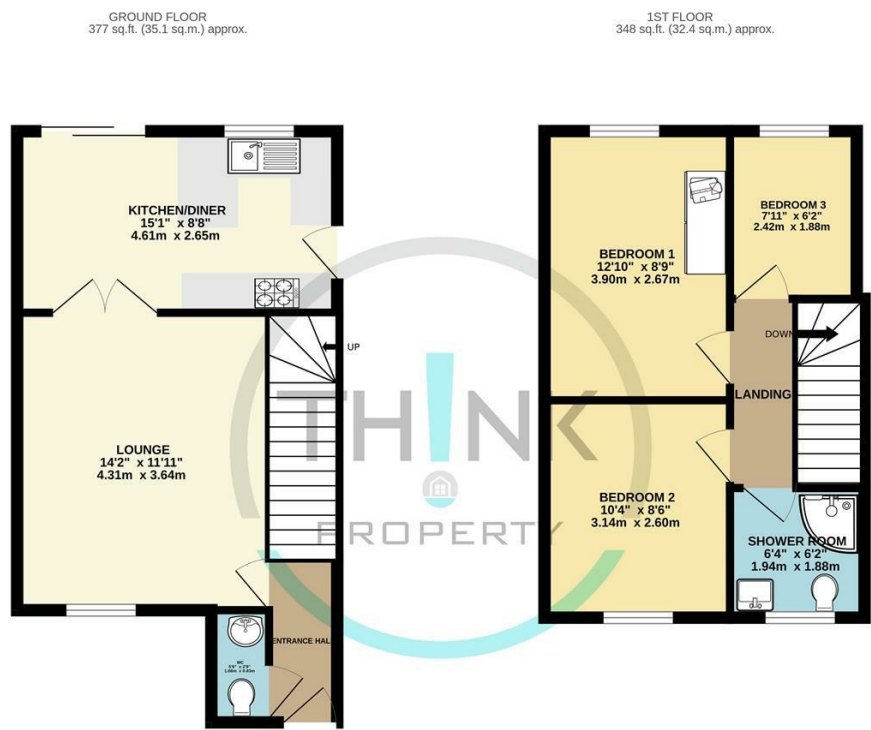
- Semi-Detached
- Downstairs WC
- Garage
- 3 Bedrooms
- Driveway
- Private Gardens



# 3 Bedroom House - Semi-Detached located in Taverham

A well-presented three-bedroom semi-detached house offering comfortable family living in the desirable residential area of Taverham. The property features a bright lounge, modern kitchen diner with French doors to the garden, and a convenient downstairs WC. Upstairs are two generously sized bedrooms, a versatile third bedroom, and a contemporary shower room.

Outside, the home benefits from a private driveway, single garage, and a secure, enclosed garden — ideal for outdoor relaxation and entertaining. A perfect blend of practicality and comfort, this property is well-suited to families or professionals alike.



TOTAL FLOOR AREA: 726 sq.ft. (67.4 sq.m.) approx.  
Whilst every attempt has been made to ensure the accuracy of the floorplan contained here, measurements of doors, windows, rooms and any other items are approximate and no responsibility is taken for any error, omission or mis-statement. This plan is for illustrative purposes only and should be used as such by any prospective purchaser. The services, systems and appliances shown have not been tested and no guarantee as to their operability or efficiency can be given.  
Made with Metropix ©2025

Call us on  
**01603 338433**

[norwich@thinkproperty.ltd](mailto:norwich@thinkproperty.ltd)  
<https://www.thinkproperty.ltd/>

**Council Tax Band**  
**C**

Energy Efficiency Rating		
	Current	Potential
Very energy efficient - lower running costs		
(92 plus) <b>A</b>		
(81-91) <b>B</b>		
(69-80) <b>C</b>		
(55-68) <b>D</b>		
(39-54) <b>E</b>		
(21-38) <b>F</b>		
(1-20) <b>G</b>		
Not energy efficient - higher running costs		
<b>England &amp; Wales</b>		EU Directive 2002/91/EC

Agents Note: Whilst every care has been taken to prepare these particulars, they are for guidance purposes only. All measurements are approximate and are for general guidance purposes only and whilst every care has been taken to ensure their accuracy, they should not be relied upon and potential buyers are advised to recheck the measurements.

